

SHORT CYCLE TRELLISING / Mini Hook, 500mh

Trellising for short cycle crops is a time-consuming task. Workers need to climb up to adjust the plant as it grows. Many times, the stems are tangled and disorganized.

Mini Hook offers easy, cost-effective, and efficient way to trellis tomato plants in a low and medium height greenhouse.

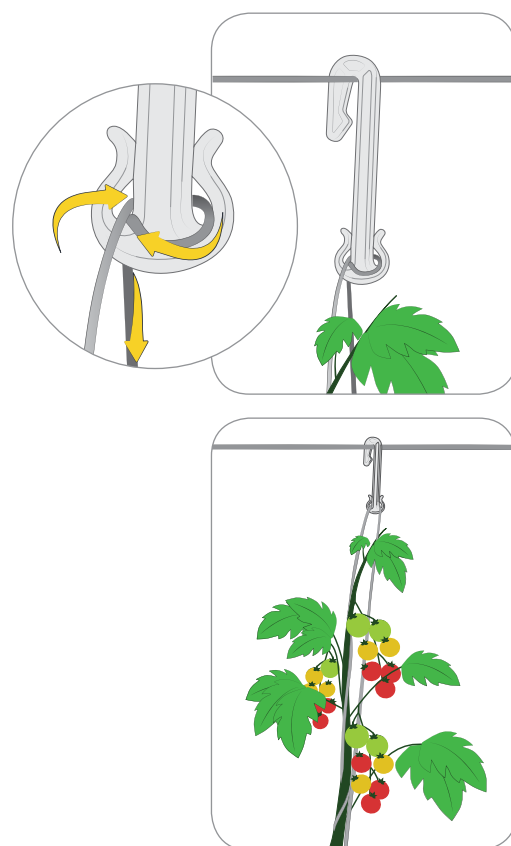
Advantages

Efficient labor

- Great value for the money
- Facilitates organized rows of plants and makes fruit picking easier
- Releasing the twine and lowering the plant is a fast and easy process
- Lowering is faster compared to opening and closing a knot
- Easy to remove the stems at the end of the season
- Suitable for up to 4 mm trellising wire
- Resistant, UV protection
- Multi-seasonal use
- In tomatoes – one side of the twine is used to adjust the length as the stem grows

Crop protection

- Stems are kept organized and are easy to maintain
- Mini Hook with twine is hung on the trellising wire to support the plant
- Doesn't slide along the wire



Instruction of use

- Attach the Mini Hook to the trellising wire
- Attach the twine to the Mini Hook
- Wind the twine (meant for lowering) around the Mini Hook and insert it inside the hook
- Take the main twine (meant to be attached to the plant) and insert it to the hook, above the other twine
- Allow one side to be connected to the plant, while the other side will be used for lowering (leave about 1 meter)